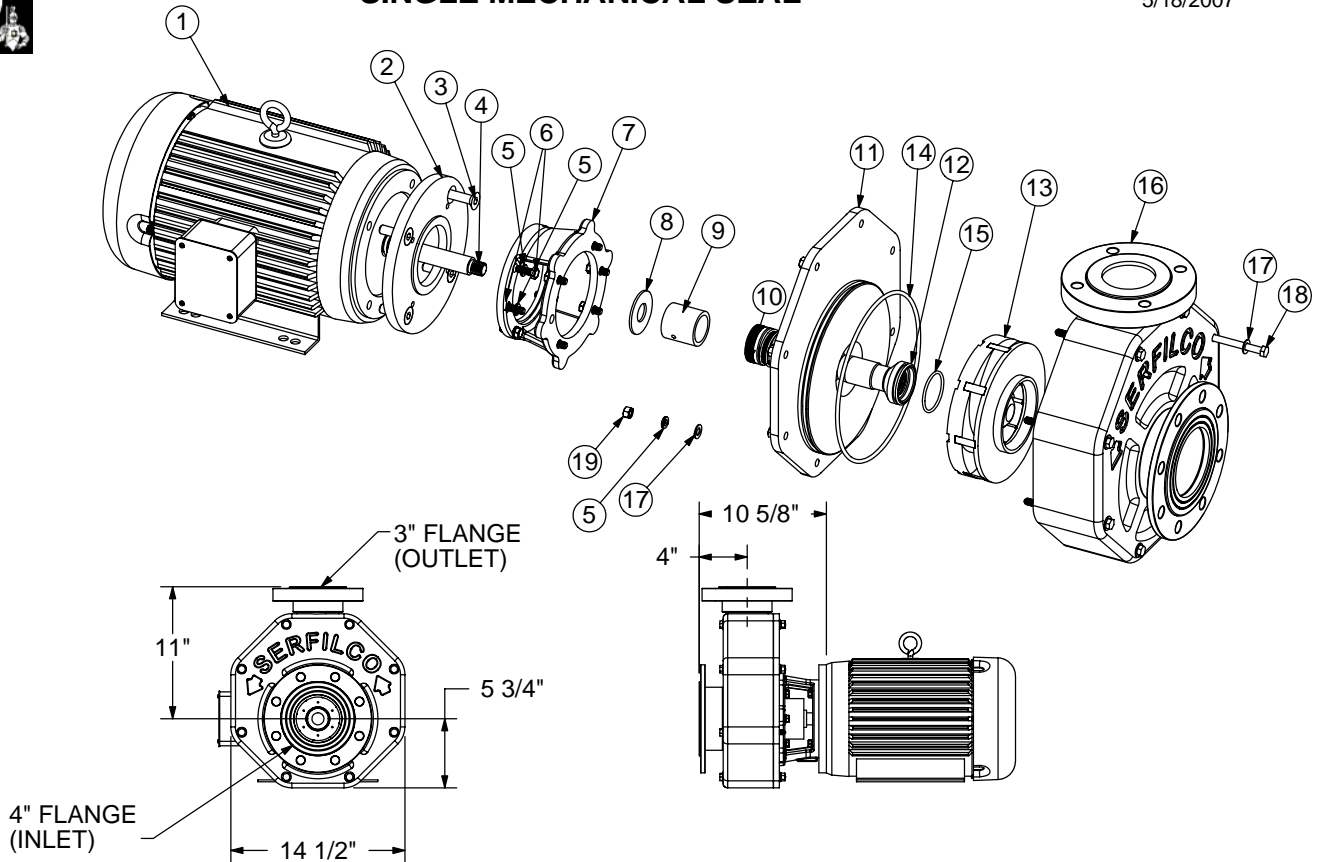




**SERIES "HA" HORIZONTAL PUMP  
HA 4 x 3F x 8  
SINGLE MECHANICAL SEAL**

PARTS LIST  
P-0977 (1 OF 2)  
5/18/2007

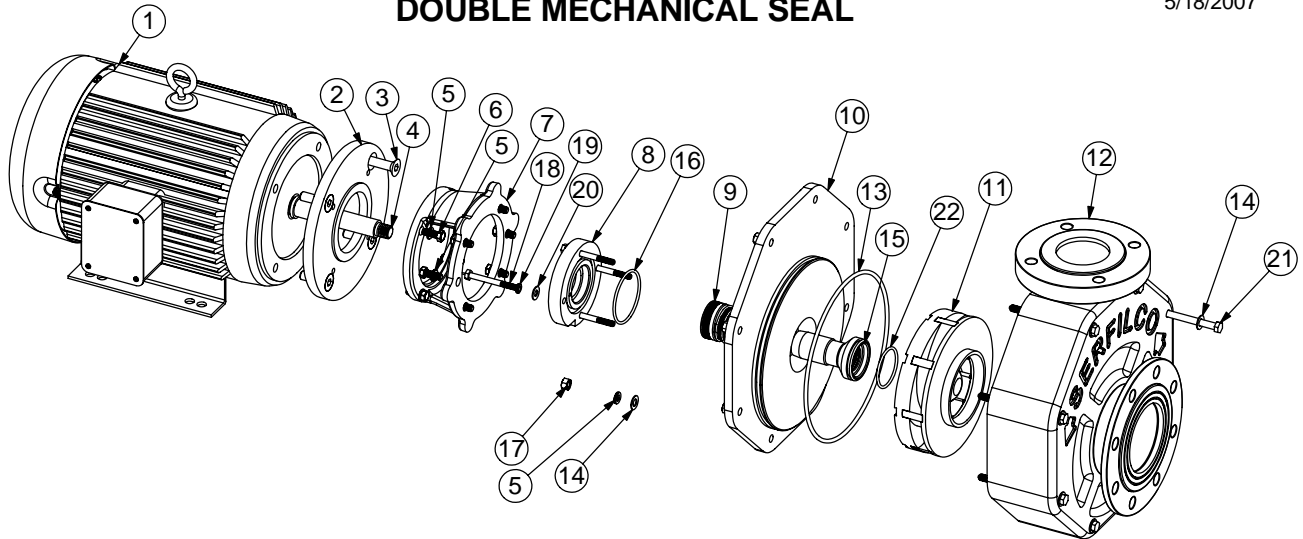


NO.	DESCRIPTION	QTY	C4	C5
1	MOTOR, 7.5 HP, 1725 RPM, 213 TCZ MOTOR, 10 HP, 1725 RPM, 215 TCZ	1	66-1356-A -	- 66-1357-A
2	PLATE, MOTOR ADAPTER, CAR ST	1	44-6249	
3	BOLT, FLAT HD., 1/2"-13 X 1",	-SS 4	11-0407	
4	SHAFT, MOTOR	-SS 1	44-7394	
5	WASHER, LOCK, 3/8",	-SS 18	11-0140	
6	BOLT, HEX HD, 3/8-16 X 1",	-SS 10	11-0375	
7	BRACKET, MOTOR CONNECTION,	-CAST IRON 1	44-6244-1	
8	WASHER, FLAT, 2 1/2" O.D. X 1 1/16" ID,	-SS 1	11-0607	
9	SPACER, MECHANICAL SEAL,	-PVC 1	44-7056	
10	SEAL, SINGLE MECHANICAL. L(M1), EPDM, CARBON SS. CERAMIC	1	55-0482	
	SEAL, SINGLE MECHANICAL. V(M2), VITON, CARBON SS. CERAMIC		55-0481	
	SEAL, SINGLE MECHANICAL. L(M8), EPDM, SILICON CARBIDE SS.		55-0516	
	SEAL, SINGLE MECHANICAL V(M8), VITON, SILICON CARBIDE SS.		55-0484	
11	CASING, SUPPORT	-CPVC 1	44-7699	
12	SLEEVE, SHAFT,	-CPVC 1	44-7727	
13	IMPELLER, -CPVC	-ø8" -ø8 7/8"	44-7731	-
			-	44-7732
14	O-RING	-EPDM -VITON	22-0859	
			22-0861	
15	O-RING	-EPDM -VITON	22-0293	
			22-0297	
16	CASING, SUCTION,	-CPVC 1	44-7700	
17	WASHER, FLAT, 3/8",	-SS 16	11-0126	
18	BOLT, 3/8"-16X5-1/4" LNG.	-SS 8	11-2149	
19	NUT, HEX, 3/8-16,	-SS 8	11-0105	

NOTE: 1.SHAFT SLEEVE ITEM 12 AND O-RING ITEM 15 NEED TO BE ORDERED ALONG WITH IMPELLER ITEM 13.

**SERIES "HA" HORIZONTAL PUMP  
HA 4 x 3F x 8  
DOUBLE MECHANICAL SEAL**

PARTS LIST  
P-0977 (2 OF 2)  
5/18/2007



NO.	DESCRIPTION	QTY	C4	C5
1	MOTOR,7.5 HP, 1725 RPM, 213 TCZ,	1	66-1356-A	-
	MOTOR,10 HP, 1725 RPM, 215 TCZ		-	66-1357-A
2	PLATE,MOTOR ADAPTER, -CAR ST	1	44-6249	
3	BOLT,FLAT HD.,1/2"-13 X 1", -SS	4	11-0407	
4	SHAFT ,MOTOR, -SS	1	44-7394	
5	WASHER,LOCK,3/8", -SS	18	11-0140	
6	BOLT,HEX HD,3/8-16 X 1" , -SS	10	11-0375	
7	BRACKET ,MOTOR CONNECTION, -CAST IRON	1	44-6244-1	
8	BACKPLATE,MECH SEAL , -CPVC	1	44-6250	
9	SEAL,DOUBLE MECHANICAL. V(M8 X M1),,VITON/EPDM, SILICON CARBIDE SS.	1		55-0470
	SEAL,DOUBLE MECHANICAL. L(M8 X M1),,EPDM/EPDM, SILICON CARBIDE SS.		55-0517	
	SEAL,DOUBLE MECHANICAL. V(M2 X M1),,VITON/EPDM, CARBON SS. CERAMIC		55-0488	
	SEAL,DOUBLE MECHANICAL. L(M1 X M1),,EPDM/EPDM, CARBON SS. CERAMIC		55-0489	
10	CASING SUPPORT,	1	44-7699	
11	IMPELLER,-CPVC	1	44-7731	-
			-	44-7732
12	CASING,SUCTION,	1	44-7700	
13	O-RING,	1	-EPDM	22-0859
			-VITON	22-0861
14	WASHER,FLAT,3/8", -SS	16	11-0126	
15	SLEEVE, SHAFT,	1	44-7727	
16	O-RING,	1	22-0567	
17	NUT,HEX ,3/8-16, -SS	8	11-0105	
18	BOLT,,5/16-18X3", -SS	4	11-0313	
19	WASHER,LOCK ,5/16", -SS	4	11-0355	
20	WASHER,FLAT,5/16", -SS	4	11-0122	
21	BOLT,3/8"-16X5-1/4" LNG.	8	11-2149	
22	O-RING,	1	-EPDM	22-0293
			-VITON	22-0297

NOTE: 1. SHAFT SLEEVE ITEM 15 AND O-RING ITEM 22 NEED TO BE ORDERED ALONG WITH IMPELLER.

F.O.B Northbrook, Illinois

Terms: Net 30 Days

Minimum order \$50.00



**SERFILCO, LTD.**

2900 MacArthur Blvd.  
Northbrook, IL 60062 U.S.A.  
Email: Sales@SERFILCO.com  
Web: WWW.SERFILCO.COM

(800) 323-5431  
(847) 509-2900  
Fax: (847) 559-1995

BULLETIN	P-207
Operation & Service Guide	O-0123