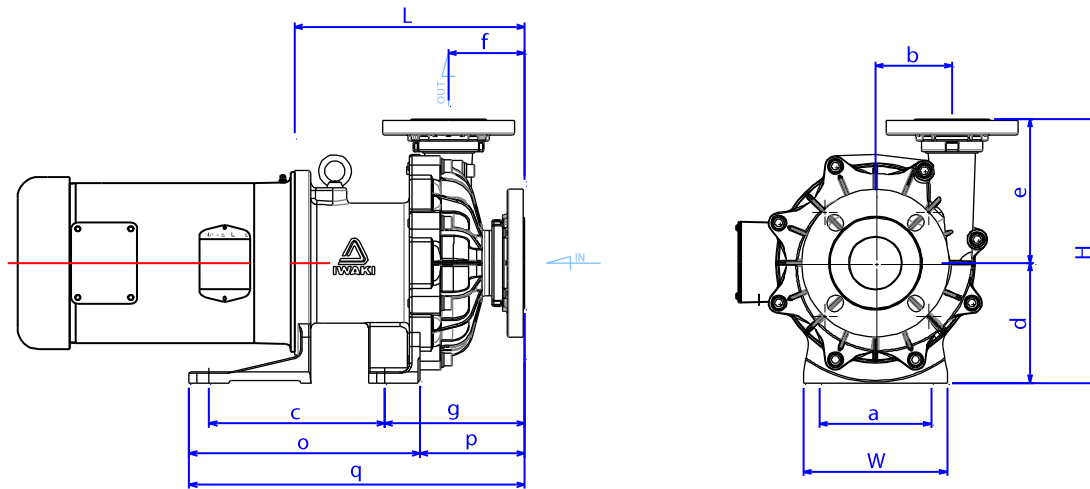


Model	MX-505	
Mark	CV(CE)	RV(RE)
1 Front Casing	GFRPP	
2 Impeller	GFRPP	
3 Rear Casing	GFRPP	
4 Magnet capsule	PP	
5 O-ring	FKM ¹	
6 Spindle	Alumina Ceramic	
7 Bearing	Carbon	PTFE
8 Rear thrust	CFRPEEK	
9 Mouth ring	PTFE	
10 Thrust/Liner ring	Alumina Ceramic	
11 Lock pin	GFRPPS	

1 EPDM and AFLAS® o-ring also available



Dimensions (in inches)

a	b	c	d	e	f	g	k	o	p	q	W	H	L
5.51	3.78	8.66	5.91	7.09	3.74	6.89	0.55	11.38	5.16	16.54	7.09	12.99	11.32

Specifications

Flange connections only Suction x Discharge	Max Discharge pressure	Max Flow	Specific gravity	Weight (less motor)
2.5" x 2.0"	86 FT	225 GPM	1.2	59.5 lbs

MX-505 5 HP

- Engineered to meet the most severe operating conditions.
- When fitted with a carbon bearing, the MX will allow for brief periods of dry running.
- The MX Series is the first resin magnet pump that uses a Split Volute Pump Casing that forms a vortex chamber.
- Patented Self-radiating structure – Heat dispersion holes force the liquid to circulate around the spindle and bearing.

MX-505

