

© 2015 Serfilco Ltd. All Right Reserved.

SERFILCO[®]

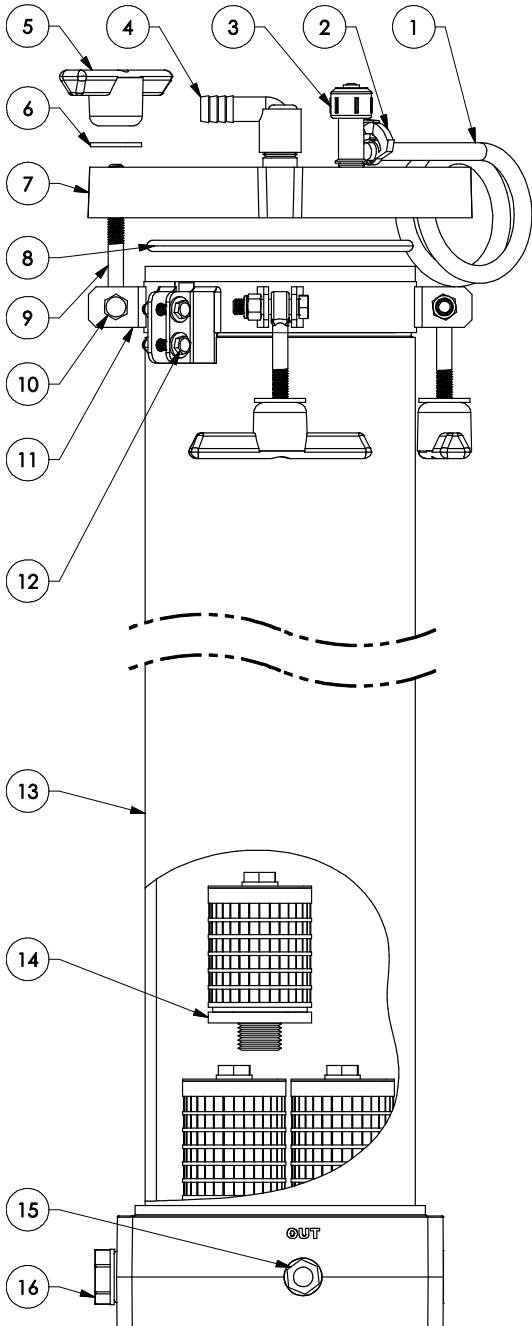
Series 'S' | Bulk Resin Chamber

2900 MacArthur Blvd. Northbrook, IL. USA 60062 WWW.SERFILCO.COM (800) 323-5431

PARTS LIST
P-4800_N
10/14/2020
Page 1 of 1

SIZE	MODELS	PRICE CODE	MODELS	PRICE CODE	MODELS	PRICE CODE
30"	PL630RS-1	78-1637-1	CL630RS-1	78-1637-2	PCL630RS-1	78-1637
40"	PL640RS-1	78-1638-1	CL640RS-1	78-1638-2	PCL640RS-1	78-1638

For bag resin chambers add 'B' to part numbers.



NO.	DESCRIPTION	QTY	30"	40"
1	Vent valve hose 8'	1	22-0913	
2	Hose clamp	1	22-0912	
3	Vent valve 1/4NPT O-ring, EPDM	1	33-8108-PP	
			22-0870	
4	Elbow hose adapter PVC	1	33-0245	
5	Tee handle 3/8"-16	4	11-0265	
6	Flat washer 3/8" SS	4	11-0447	
7	Cover assembly CPVC	1	88-0756	
8	Cover O-ring, EPDM	1	22-0940	
			22-0940-V	
9	Swing bolt 3/8"-16x3-1/2" SS	4	11-0497-1	
10	Bolt 3/8"-16x1-5/8" SS	4	11-0444-1	
11	Nut 3/8"-16 SS	4	11-0519	
11	Swing bolt bracket SS	1	88-0596	
12	Bolt 1/4"-20x1-1/4" SS	2	11-0390	
12	Washer 1/4" SS	2	11-0121	
12	Nut, Nyloc 1/4"-20 SS	2	11-2191	
13	Shell & base assembly, CPVC (translucent) PVC PVC	1	77-9980	77-9979
			77-9980-1	77-9979-1
			77-9980-1C	77-9979-1C
14	Filter nozzle 250 µm PP	3	33-1948	
14a	Resin bag - not shown	1	88-1525	
	Mesh disc - not shown (remove filter nozzles)	3	88-1036	
15	Plug 1/2NPT CPVC O-ring, EPDM	1	33-0866	
			22-2209	
			22-2209-V	
16	Plug 1NPT CPVC O-ring, EPDM	1	33-0212	
			22-0605	
			22-0604	
17	Resin - Select as needed (see bulletin below)			

Product Bulletin:	R-201
Resin Bulletin:	R-208
Operation and Service Guide:	O-930